

Display Extension

OP-ALR20L-HG

Torque Adjustable Swivel Arm Mount for Medical Display



Features

- Easy Display Maneuverability
- Arm Swivel x 2
- User Torque Adjustable
- Ceiling Mount
- Cable Management

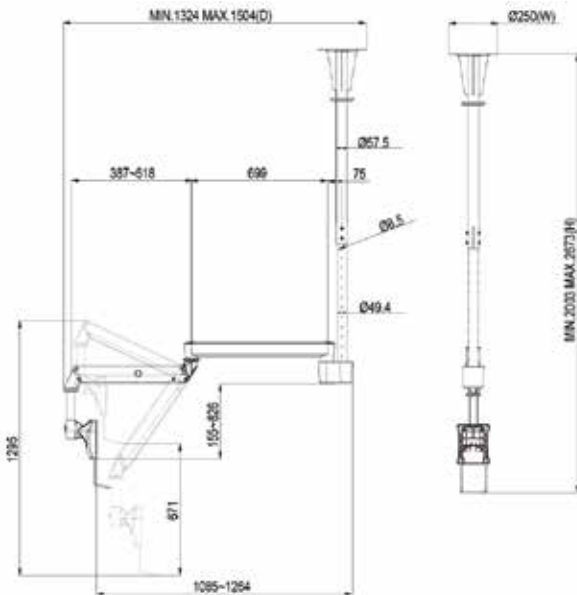
Specifications

Complete System

Net Weight	39.2 lbs. (17.7 kg)
Dimension (W*H*D)	9.84" x 105.24" x 59.21" (250 x 267 x 1504 mm)
Screw Type	M4
Material	Steel / Aluminum Alloy / Plastic

Display System

Hinge Module Swivel	+/-185°
Hinge Tilt	-60° ~ +20°
Hinge User Torque Adjust	Available
Display Mount Pattern	100 x 100 / 75 x 75mm
Display Type	Single Monitor
Panel Size Support	15" ~ 24"
Support Weight (Range)	13.23 ~ 26.46 lbs. (6 ~ 12 kg)
Arm Swivel 1	+/-90°
Arm Swivel 2	+/-185°
Arm Height Adjustment	26.42" (671 mm)
Tension Torque Adjust	Yes
Tilt (Arm)	-55°(down) ~ +25°(up)
Extended Arm Provided	2
Cable Management	Yes



Swivel



Tilt Cable Management Height Adjust Torque Adjust

